



01.08.17

Online at www.j6farms.com



Offering eight of the finest Red Angus from the heart
of J6 and featuring 30 embryos selling as 10 lots.

Sale cattle are on display on the hill at the Denver Stock Show in the J6 Farms Red Angus aisle.

Sunday, 01.08.17

Online at www.j6farms.com

Sale starts at 7:00 a.m. (M.S.T.) Sale ends at 6:00 p.m. (M.S.T.)



Sale Day Contacts ...

David Spencer /J6308.627.6259david.spencer@hvrtrust.com
Charlie Spencer /J6 308.224.4367cspencer_74@yahoo.com
Mark Blake /J6712.269.1361markblake11@yahoo.com
Randy Ratliff/R & R Marketing615.330.2735Randy@rrmktg.com
PJ Budler/International Sales682.597.0380 info@thecattlemarket.net

Technical Support

Abby Hinton/R & R Marketing919.618.8098Abby@rrmktg.com

MWSS Red Angus Schedule ...

Saturday, January 7th

8:00 a.m. Junior Red Angus Show (on the Hill)

Sunday, January 8th

11:00 a.m. Pen Show (in the Yards)

2:00 p.m. J6 Mile High Online Sale (sale cattle displayed in J6 Farms Red Angus aisle)

Monday, January 9th

8:00 a.m. National RAAA Show (on the Hill)

Sale Mangement ...



Randall O. Ratliff, 615.330.2735
Randy@RRMktg.com www.RRMktg.com
1212 Laurel St. #1614, Nashville, TN 37203
(L#2845)

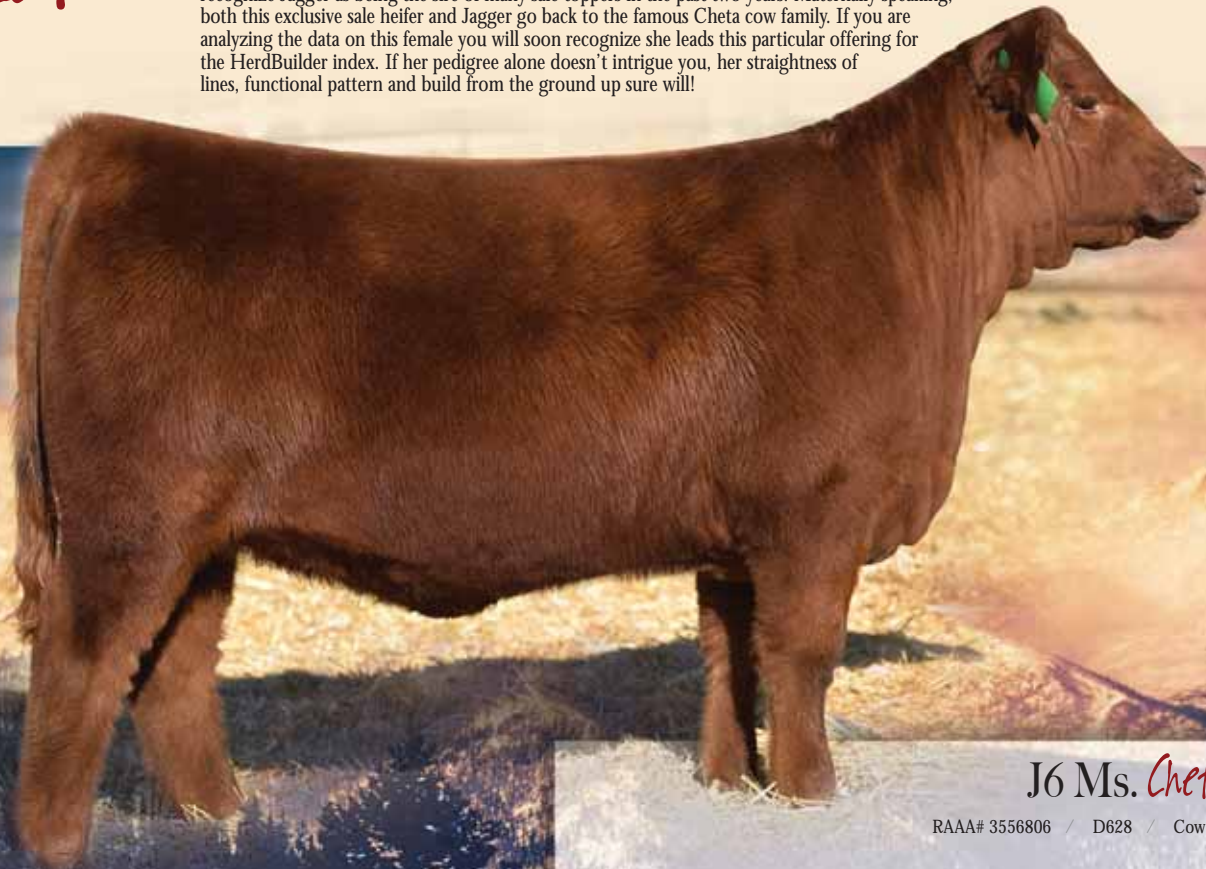


David Spencer, 308.627.6259
Charles Spencer, 308.224.4367
Mark Blake, 712.269.1361
Brett Schroeder, 308.627.8422
5960 Maple Road, Gibbon, NE 68840
www.j6farms.com

Bid online at www.j6farms.com.

Lot 2

The genetics represented in J6 MS Cheta D628's pedigree are ones that we are deeply invested in and believe they will have a significant impact of the future of the Red Angus breed. Her sire, VGW Game Plan is not only the sire of Six Mile & CO Jagger, he is also the grandsire of Six Mile Taurus, our two leading sires. Many of you recall Taurus as being the Two-Time NWSS champion and you recognize Jagger as being the sire of many sale toppers in the past two years. Maternally speaking, both this exclusive sale heifer and Jagger go back to the famous Cheta cow family. If you are analyzing the data on this female you will soon recognize she leads this particular offering for the HerdBuilder index. If her pedigree alone doesn't intrigue you, her straightness of lines, functional pattern and build from the ground up sure will!



J6 Ms. Cheta D628

RAAA# 3556806 / D628 / Cow / 04.03.2016

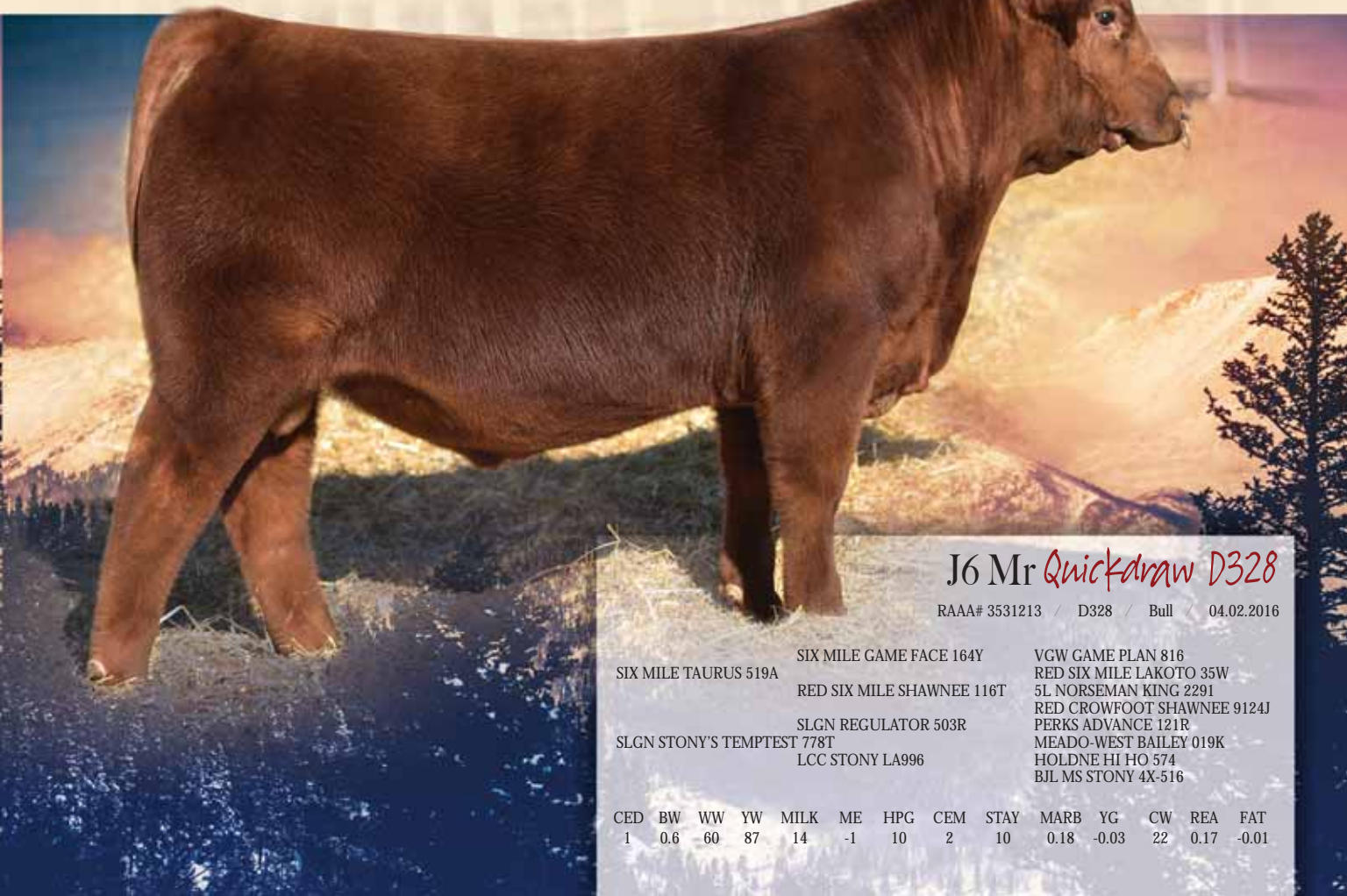
VGW GAME PLAN 816	VGW GAME PLAN 508	LCC IMF B054M
	VGW TW DOLL 0270	VGW PT-DORY 0361
	RED BENCHMARK BETTER BEEF	TW MILKY WAY 2038
RED SIX MILE CHETA 105B	RED SIX MILE CHETA 795S	VGW DIV-DOLL 9716
		BASIN EXT 45T5
		RED FAYETTE OF BENCHMARK 424
		RED TOWAW INDEED 104H
		RED SIX MILE CHETA 626L

CED	BW	WW	YW	MILK	ME	HPG	CEM	STAY	MARB	YG	CW	REA	FAT
1	-0.2	61	91	12	-3	11	2	11	0.57	0.09	24	-0.04	0.01

Bid online at www.j6farms.com.

Lot 3

Since the first time this herd sire in the making stopped and struck a pose in the pasture last summer, he quickly became our favorite as well as the favorite of everyone who has stopped in. This calf is very unique and special from so many different angles; the depth of rib and quarter, his huge top and his highly functional skeletal design make you wonder how a calf this youthful can already have so many undeniable herd sire traits. Just study this calf and try to find a flaw in him, he is as fault-free as we have made one. This Six Mile Taurus 519A son, has so many of the very same traits that made him the repeat Denver champion and one of the finest bulls being used in the breed today. We are confident that Quickdraw is comparable in quality to his paternal brother Six Mile High Caliber who demanded \$115,000 for our friends at Six Mile Ranch. Selling 50% semen interest and full possession after show career. For the week of the National Western Stock Show only, we are offering a select few semen packages - 40 units for \$5,000.



J6 Mr Quickdraw D328

RAAA# 3531213 / D328 / Bull / 04.02.2016

SIX MILE TAURUS 519A	SIX MILE GAME FACE 164Y	VGW GAME PLAN 816
	RED SIX MILE SHAWNEE 116T	RED SIX MILE LAKOTO 35W
	SLGN REGULATOR 503R	5L NORSEMAN KING 229I
SLGN STONY'S TEMPTTEST 778T	LCC STONY LA996	RED CROWFOOT SHAWNEE 9124J
		PERKS ADVANCE 121R
		MEADO-WEST BAILEY 019K
		HOLDNE HI HO 574
		BJL MS STONY 4X-516

CED	BW	WW	YW	MILK	ME	HPG	CEM	STAY	MARB	YG	CW	REA	FAT
1	0.6	60	87	14	-1	10	2	10	0.18	-0.03	22	0.17	-0.01

Bid online at www.j6farms.com.

Lot 4

J6 MS Deed D 310 represents a mating that gave us the results that were anticipating, she is simple breathtaking! Her sire is the past two-time NWSS Champion, Six Mile Taurus who has managed to stamp his progeny with exceptional quality and balance. Then, when you add the cow power of the Towaw Indeed 104H daughter, J6RA MS Indeed 158 to the equation ... boom! The genetic value alone is awe-inspiring in this female, give the fact that Towaw Indeed 104 semen is extremely rare and valuable and the fact that Taurus progeny will continue to demand top dollar for years to come. D310 manages to tie together exceptional eye appeal, an explosive rib shape and an is exceptionally sound strided when you put her in motion.



J6 Ms. Deed D310

RAAA# 3556808 / D310 / Cow / 03.15.2016

SIX MILE TAURUS 519A	SIX MILE GAME FACE 164Y	VGW GAME PLAN 816
	RED SIX MILE SHAWNEE 116T	RED SIX MILE LAKOTO 35W
	RED TOWAW INDEED 104H	5L NORSEMAN KING 229I
J6RA MS INDEED 158	RED SIX MILE FAVORITE 890S	RED CROWFOOT SHAWNEE 9124J
		RED CC EXPANSION 5E
		RED TOWAW MOLLY 67C
		RED SIX MILE PRICELESS 268P
		RED JAS BELLE 3M

CED	BW	WW	YW	MILK	ME	HPG	CEM	STAY	MARB	YG	CW	REA	FAT
5	-2.5	45	60	22	-10	11	3	10	0.17	-0.04	2	-0.02	-0.00

Bid online at www.j6farms.com.

Lot 5

A full-sister to our feature herdsire prospect, J6 Mr Quickdraw! We believe deeply in the power of phenomenal cow families and the fact they can truly shape a cowherd and dictate the profitability of a purebred operation. This stand out show heifer prospect traces back to one of the very finest production females in the breed, LCC Stony LA996 who was the partnership donor for Solution Genetics and Leachman Cattle Barons and the dam of the great SLGN Stony Savannah, who Cassie Johnson showed to the winner circle at each of the 3 majors in 2007. Just as we believe in the importance of dominant cow families, we also believe in offering several of our very best out of each calf crop, D312 certainly is one of our elite heifers from 2016 and we honored to be able to offer her for public auction. The legendary and notable genetics reflected in this pedigree read like a "who's who" in the modern Red Angus registry. Selling 1/2 interest with the option to double.



J6 Ms *Temptation* D312

RAAA# 3556095 / D312 / Cow / 03.14.2016

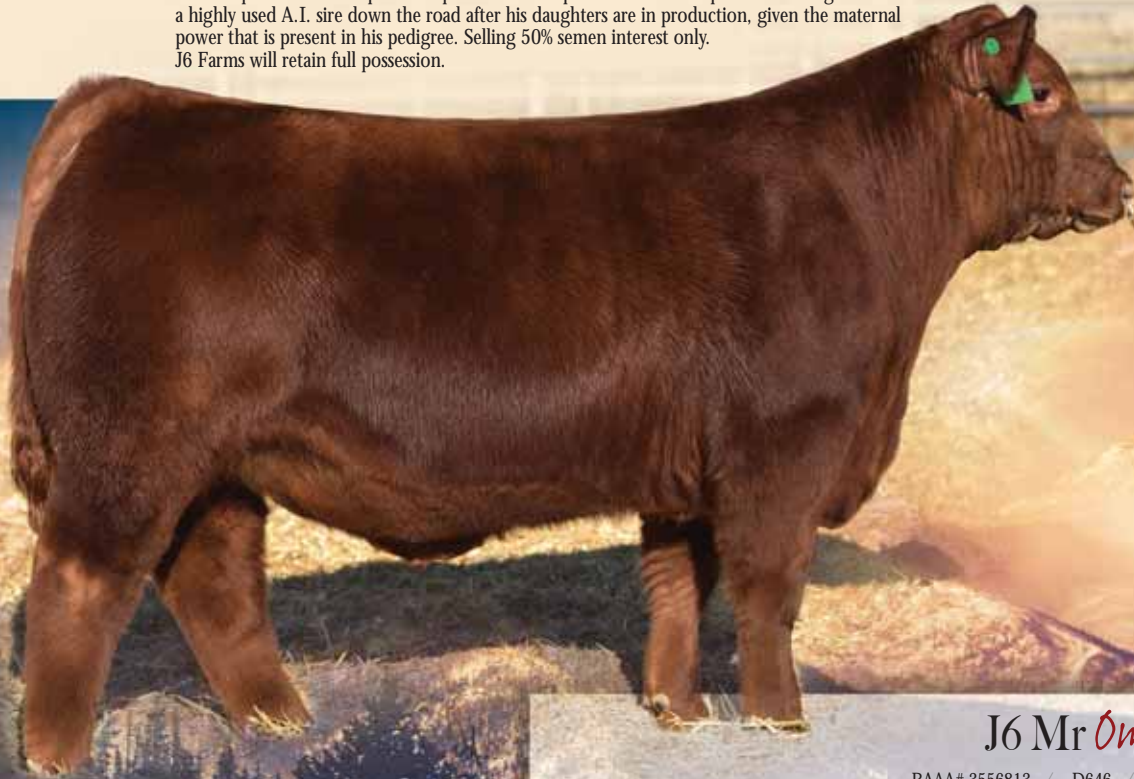
SIX MILE TAURUS 519A	SIX MILE GAME FACE 164Y	VGW GAME PLAN 816
	RED SIX MILE SHAWNEE 116T	RED SIX MILE LAKOTO 35W
		5L NORSEMAN KING 229I
	SLGN REGULATOR 503R	RED CROWFOOT SHAWNEE 9124J
SLGN STONY'S TEMPTST 778T	LCC STONY LA996	PERKS ADVANCE 121R
		MEADO-WEST BAILEY 019K
		HOLDNE HI HO 574
		BJL MS STONY 4X-516

CED	BW	WW	YW	MILK	ME	HPG	CEM	STAY	MARB	YG	CW	REA	FAT
1	0.6	60	87	14	-1	10	2	10	0.18	-0.03	22	0.17	-0.01

Bid online at www.j6farms.com.

Lot 6

L83 Super Duty was Six Mile's selection out of the 2013 Lodoen Cattle Co. bull sale, prior to that he was a successful part of the L83 show string at NILE and Denver, 646 is made much like him, big hipped, deep enough and sound footed. Found in this herd sire prospects lineage, is the great Red Six Mile Ms Extra 201T who has earned the prestigious title of "Premier Dam" within the CAA registry, she has maintained a 105 ww index on 7 calves and Six Mile has 5 maternal sisters to her working in their program, now that's cow power! If making replacements and producing your own herd sires is the goal, MR Omaha certainly fits the bill. Exceptional growth numbers, which place him in the top 20% for WW epd and top 23% for YW epd! It wouldn't surprise us if 646 goes on to be a highly used A.I. sire down the road after his daughters are in production, given the maternal power that is present in his pedigree. Selling 50% semen interest only. J6 Farms will retain full possession.



J6 Mr Omaha D646

RAAA# 3556813 / D646 / Bull / 03.09.2016

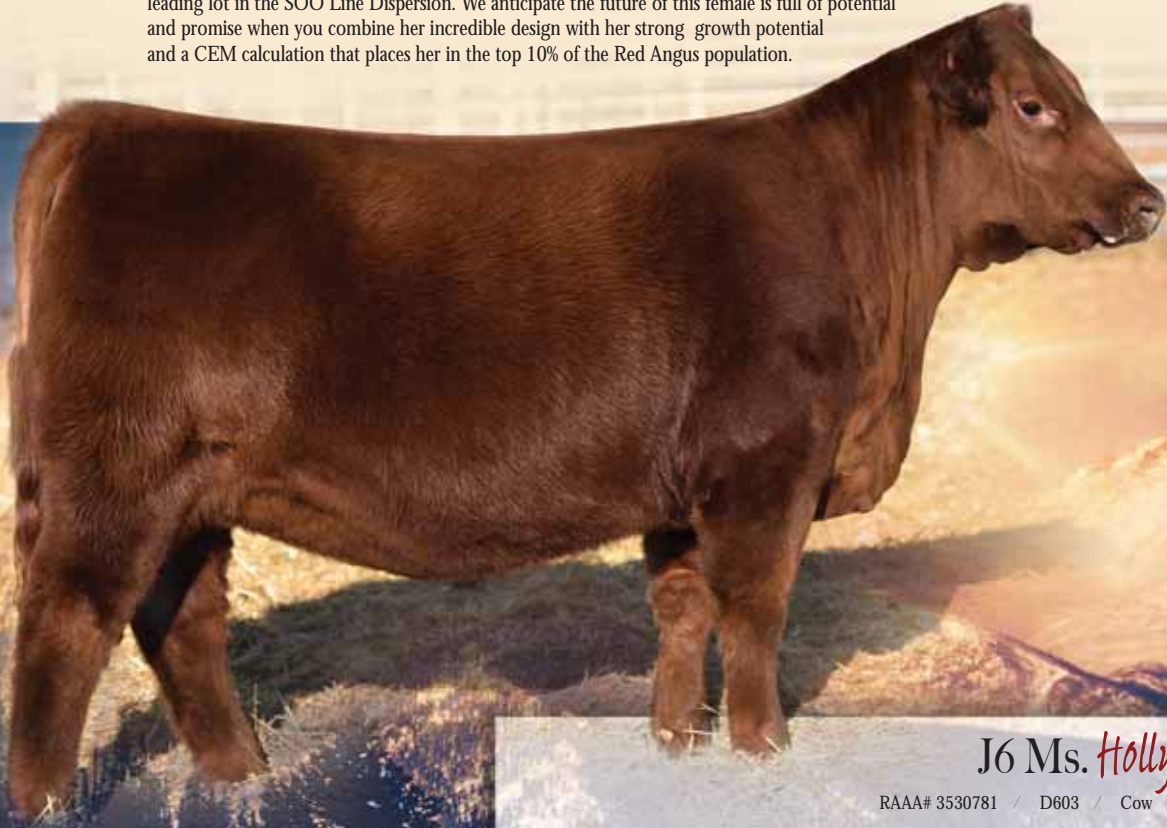
L83 SUPER DUTY 244Z	SIX MILE KING RANCH 721W	5L NORSEMAN KING 2291
	L83 BERTHA 077	RED SIX MILE COUNTESS 198T
	RED SIX MILE RAWHIDE 222X	L83 ENTOURAGE
RED SIX MILE MS EXTRA 514B	RED SIX MILE MS EXTRA 210T	MESSMER BERTHA 062P
		RED LAZY MC SMASH 41N
		RED YY TAFFETA 306N
		RD TER-RON FULLY LOADED 540R
		RED SIX MILE MS. EXTRA 318P

CED	BW	WW	YW	MILK	ME	HPG	CEM	STAY	MARB	YG	CW	REA	FAT
2	-0.6	67	102	22	-7	10	5	11	0.37	0.10	30	0.12	0.02

Bid online at www.j6farms.com.

Lot 7

J6 Ms. Holly D603 is one of those females who demands your attention from the very first time you lay eyes on her. She is a direct daughter of Margaret Spencer's 2014 NWSS Class contender, WR MS Holly 3042; who in her own right has gone on to make an extraordinary female and is a true asset to our breeding program. Being a paternal sister to WEBR Night Train only adds to her value in our opinion. D603 is sired by one of the most powerfully constructed and easiest fleshing bulls in the breed, Red Cockburn Ribeye 308U, who is genetically clean and was a leading lot in the SOO Line Dispersion. We anticipate the future of this female is full of potential and promise when you combine her incredible design with her strong growth potential and a CEM calculation that places her in the top 10% of the Red Angus population.



J6 Ms. Holly D603

RAAA# 3530781 / D603 / Cow / 03.02.2016

RED BAR-E-L RIBEYE 103R	RED TER-RON DIGGER 11L
RED COCKBURN RIBEYE 308U	RED BAR-E-L MARCIE 50N
RED WILBAR CORA 443P	RED TER-RON TORNADO 157M
WEBR DOC HOLLIDAY 2N	RED HEAD CORA 159L
WR MS HOLLY 3042	MLK CRK CUB 722
EAGL 4469	WEBR MS DOLLY 1L
	LCHMN GRANDCANYON 1244G
	STRAKA'S MS HI HOOD9503

CED	BW	WW	YW	MILK	ME	HPG	CEM	STAY	MARB	YG	CW	REA	FAT
0	0.3	67	101	22	-1	11	8	7	0.30	0.12	31	-0.23	-0.01

Bid online at www.j6farms.com.

Lot 8

4MC Hi Ho Holly 280 was one of Edwards's favorite show heifers that we bought from Los Rajos, we were fortunate that she won her class in Denver and has gone on to make an exceptional cow. Unlike some producers, we don't feel that her being able to hang banner and then being able to raise a calf is a bonus, here at J6 it is a requirement. Holly Berry is a late February heifer who in the past 30 days has really started to come into her own and should be a contender on the tan bark and green shavings in 2017; she would work particularly well for a Junior. We would enjoy nothing more than to see a young person experience the same success that Edward did showing her dam. Also, don't forget that Jagger semen is selling at a premium, which will definitely add to the value of this special female!



J6 Holly Berry D623

RAAA# 3556820 / D623 / Cow / 02.25.2016

SIX MILE & CO JAGGER 780A
RED SIX MILE CHETA 702W
PIE GRIDMASTER 8066
4MC HI HO HOLLY 280
CCR HI HO 118-313

VGW GAME PLAN 508
VGW TW DOLL 0270
RED SIX MILE SAKIC 832S
RED SIX MILE CHETA 716S
PIE GRIDMASTER 589
PIE PRISCILLA BO 859
VOS HIHO 904-110
CCR EASY MAID 636-118

CED	BW	WW	YW	MILK	ME	HPG	CEM	STAY	MARB	YG	CW	REA	FAT
4	-0.3	63	88	19	-2	9	5	10	0.40	0.06	21	-0.09	-0.00

Bid online at www.jcfarms.com.

Lot 9

Selling one package of three embryos.



WR Ms Betty 9035

THREE Embryos

Selling one package of three embryos.

MAJESTIC LION HEART A25
 MAJESTIC LIGHTNING 717 SGMR
 MAJESTIC MS. ADVANCER R115
 WEBR DR. PHIL
 WR MS BETTY 9035
 WR MS BETTY 640
 WHITESTONE CAYENNE 423R
 WHITESTONE BLOCKANNA R22
 4L SUPER VISION R2292
 MS ADVANCER OF 4L RM30
 MLK CRK CUB 722
 WEBR MS DOLLY 1L
 RAVISHING ADVANCE 363
 TMAS MS BETTY 120

CED	BW	WW	YW	MILK	ME	HPG	CEM	STAY	MARB	YG	CW	REA	FAT
0	-0.05	57	83	17	3	9	3	9	0.21	0.14	20	-0.23	0.01

Bid online at www.j6farms.com.

Lot 10 & 11

Selling two packages of three embryos.



Six Mile Taurus 519A



WR Ms Betty 9035

THREE Embryos

Selling two packages of three embryos.

SIX MILE TAURUS 519A

SIX MILE GAME FACE 164Y

VGW GAME PLAN 816
RED SIX MILE LAKOTO 35W

RED SIX MILE SHAWNEE 116T

5L NORSEMAN KING 2291
RED CROWFOOT SHAWNEE 9124J

WEBR DR. PHIL

MLK CRK CUB 722

WR MS BETTY 9035

WR MS BETTY 640

WEBR MS DOLLY 1L
RAVISHING ADVANCE 363
TMAS MS BETTY 120

CED	BW	WW	YW	MILK	ME	HPG	CEM	STAY	MARB	YG	CW	REA	FAT
3	0.05	58	81	19	0	9	3	9	0.17	0.09	18	-0.11	0.00

Bid online at www.jofarms.com.

Lot 12

Selling one package of three embryos.



Six Mile Taurus 519A

THREE Embryos

Selling one package of three embryos.

SIX MILE TAURUS 519A

SIX MILE GAME FACE 164Y

VGW GAME PLAN 816
RED SIX MILE LAKOTO 35W
5L NORSEMAN KING 2291
RED CROWFOOT SHAWNEE 9124J
WEBR DOC HOLIDAY 2N
PFFR MS NYACK 237
NBAR HAMLEY S913
FSR M. STATEMENT NOLA 913W

RED SIX MILE SHAWNEE 116T

WEBR TC CARD SHARK 1015

KD FANCY 35K

MWFS YALANDA 102Y

CED	BW	WW	YW	MILK	ME	HPG	CEM	STAY	MARB	YG	CW	REA	FAT
3	-1.2	55	79	12	3	10	3	9	0.27	-0.01	15	0.14	0.00

Bid online at www.j6farms.com.

Lot 13

Selling one package of three embryos.



4L Ms Mary Fay 002

THREE Embryos

Selling one package of three embryos.

SIX MILE GAME FACE 164Y	VGW GAME PLAN 816	VGW GAME PLAN 508
	RED SIX MILE LAKOTO 35W	VGW TW DOLL 0270
	RED FINE LINE MULBERRY 26P	RED LAZY MC SMASH 41N
4L MS MARY FAY 002	MS CHATEAU OF 4L R111	RED STEWART LAKOTO 612S
		RED COMPASS MULBERRY 449M
		RED DUS FAYETTE 8G
		GLACIER CHATEAU 744
		MS HIWOOD HERO 4L F92

CED	BW	WW	YW	MILK	ME	HPG	CEM	STAY	MARB	YG	CW	REA	FAT
1	-1.4	58	89	16	0	13	5	10	0.16	0.06	21	0.13	0.02

Bid online at www.j6farms.com.

Lot 14

Selling one package of three embryos.

J6RA BKE Indeed

4L Ms Mary Fay 002

THREE Embryos

Selling one package of three embryos.

J6RA BKE INDEED	RED TOWAW INDEED 104H	RED CC EXPANSION 5E
	RED SIX MILE FAVORITE 890S	RED TOWAW MOLLY 67C
	RED FINE LINE MULBERRY 26P	RED SIX MILE PRICELESS 268P
4L MS MARY FAY 002	MS CHATEAU OF 4L R111	RED JAS BELLE 3M
		RED COMPASS MULBERRY 449M
		RED DUS FAYETTE 8C
		GLACIER CHATEAU 744
		MS HIWOOD HERO 4L F92

CED	BW	WW	YW	MILK	ME	HPG	CEM	STAY	MARB	YG	CW	REA	FAT
1	-1.7	53	81	17	-7	14	8	10	0.06	0.01	16	0.05	0.00

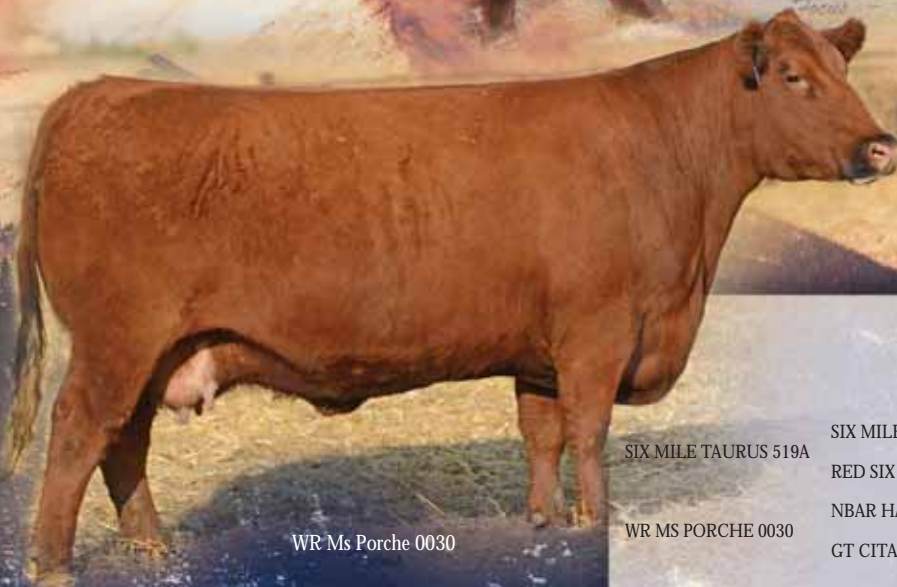
Bid online at www.j6farms.com.

Lot 15 & 16

Selling two packages of three embryos.



Six Mile Taurus 519A



WR Ms Porche 0030

THREE Embryos

Selling two packages of three embryos.

SIX MILE TAURUS 519A	SIX MILE GAME FACE 164Y	VGW GAME PLAN 816
	RED SIX MILE SHAWNEE 116T	RED SIX MILE LAKOTO 35W
	NBAR HAMLEY S913	5L NORSEMAN KING 2291
WR MS PORCHE 0030	GT CITA 4060	RED CROWFOOT SHAWNEE 9124J
		PIE BILLINGS 487
		NBAR KELLY 913
		CITATION 138
		JMDF MISS LANA

CED	BW	WW	YW	MILK	ME	HPG	CEM	STAY	MARB	YG	CW	REA	FAT
4	-1.1	48	65	21	-5	10	4	8	0.35	-0.05	7	0.01	-0.01

Bid online at www.jofarms.com.

Lot 17

Selling one package of three embryos.



Six Mile Taurus 519A

THREE Embryos

Selling one package of three embryos.

SIX MILE TAURUS 519A	SIX MILE GAME FACE 164Y	VGW GAME PLAN 816
	RED SIX MILE SHAWNEE 116T	RED SIX MILE LAKOTO 35W
	SLGN REGULATOR 503R	5L NORSEMAN KING 2291
SLGN STONY'S TEMPEST 778T	LCC STONY LA996	RED CROWFOOT SHAWNEE 9124J
		PERKS ADVANCE 121R
		MEADO-WEST BAILEY 019K
		HOLDEN HI HO 574
		BJR MS STONY 4X-516

CED	BW	WW	YW	MILK	ME	HPG	CEM	STAY	MARB	YG	CW	REA	FAT
1	1.7	62	91	14	-1	9	1	11	0.18	0.00	24	0.14	-0.01

Bid online at www.j6farms.com.

Lot 18

Selling one package of three embryos.



JKC Berry Advance 36W

THREE Embryos

Selling one package of three embryos.

	RED BAR-E-L RIBEYE 103R	RED TER- RON DIGER 11L
RED COCBURN RIBEYE 308U	RED WILBAR CORA 443P	RED BAR-E-L MARCIE 50N
		RED TER-E-L MARCIE 50N
	RED FINE LINE MULBERRY 26P	RED HEAD CORA 159L
JKC BERRY ADVANCE 36W	MS ADVANCER OF 4L R230	RED COMPASS MULBERRY 449M
		RED DUS FAYETTE 8G
		PERKS ADVANCER 9088
		4L S BRYKN DIVIDE R935

CED	BW	WW	YW	MILK	ME	HPG	CEM	STAY	MARB	YG	CW	REA	FAT
0	2.2	73	109	17	-3	13	7	9	0.14	0.04	38	-0.07	-0.04



The **NEBRASKA**
Classic

KEARNEY, NE

Be sure to watch for our
four consignments to the
Nebraska Cattlemen's Classic
Red Angus Show on
February 22, 2017 at 10 a.m.
with the Red Angus Sale to
follow at 3:00 p.m.

J6 Mr Gametime D645

03.11.16

SIRE: Six Mile Game Face 164Y
DAM: 4L Ms Mary Fay 002
CED: 2 BW: -1.6 WW: 55 YW: 85
MILK: 18 ME: 0 HPG: 13 CEM: 5
STAY: 10 MARB: 0.32 YG: 0.05 CW: 18
REA: 0.05 FAT: 0.01



J6 Fay D632

04.10.16

SIRE: Six Mile Game Face 164Y
DAM: 4L Ms Mary Fay 002
CED: 2 BW: -1.6 WW: 55 YW: 85
MILK: 18 ME: 0 HPG: 13 CEM: 5
STAY: 10 MARB: 0.32 YG: 0.05
CW: 18 REA: 0.05 FAT: 0.01



J6 Ms Sue Ellen 800C

Safe Bred 05.01.16 to 07.01.16 to C565
02.05.15

SIRE: NBAR Hamley S913
DAM: WEBR MS Sue Ellen 18S
CED: 4 BW: -2.4 WW: 51 YW: 70 MILK: 20 ME: 4
HPG: 12 CEM: 7 STAY: 6 MARB: 0.43 YG: 0.03 CW: 8
REA: -0.26 FAT: -0.02



J6 Mr Storm C565

01.29.2015

SIRE: PZC TMAS Firestorm 1800 ET
DAM: WR MS Betty 9035
CED: 2 BW: 0.4 WW: 54 YW: 78 MILK: 21 ME: 5 HPG: 12
CEM: 10 STAY: 9 MARB: 0.17 YG: 0.02 CW: 17
REA: -0.11 FAT: -0.02



J6 Mr State of Shock D639

02.05.2016

SIRE: Six Mile & Co Jagger 780A

DAM: J6 Cora B440

CED: 5 BW: -0.5 WW: 70 YW: 98 MILK: 18 ME: -7
HPG: 10 CEM: 5 STAY: 9 MARB: 0.31 YG: 0.11 CW: 27
REA: -0.16 FAT: -0.00



J6 Jagger D638

02.14.16

SIRE: Six Mile & Co Jagger 780A

DAM: J6 Ms. Dynamo 9622

CED: 6 BW: -0.2 WW: 62 YW: 89 MILK: 21 ME: -1
HPG: 9 CEM: 6 STAY: 9 MARB: 0.34 YG: 0.14 CW: 22
REA: -0.22 FAT: 0.01



J6 Mr Lightningbug C888

10.01.15

SIRE: Majestic Game On A116

DAM: Majestic Lightningbug X44

CED: 1 BW: -1.4 WW: 63 YW: 98 MILK: 25
ME: 4 HPG: 10 CEM: 3 STAY: 7 MARB: 0.56
YG: 0.04 CW: 26 REA: 0.03 FAT: -0.01



J6 Mr True Blue D637

02.08.2016

SIRE: Six Mile Varsity Blues 14Z

DAM: L83 Duchess 7B

CED: 1 BW: 0.3 WW: 67 YW: 94 MILK: 15 ME: -8
HPG: 12 CEM: 3 STAY: 11 MARB: 0.14 YG: 0.06 CW: 26
REA: 0.09 FAT: 0.01



J6 Thunderstruck D651

02.14.16

SIRE: Majestic Lightning 717 SGMR

DAM: EDRD MS Queen 2099

CED: -2 BW: 1.4 WW: 71 YW: 105 MILK: 21
ME: -1 HPG: 11 CEM: 3 STAY: 5 MARB: 0.35
YG: 0.06 CW: 34 REA: 0.00 FAT: -0.01



MARCH 23

J6 HEADQUARTERS Gibbon, NE

J6 Farms Red Angus Bull Power III & Female Production Sale

Offering 200 Lots

50 Registered Red Angus Beef Bulls

50 Registered Red Angus Bred Females

100 Red Angus Influenced Commercial Bred Females

For more information
contact sale management ...



Randall O. Ratliff

615.330.2735

Randy@RRMktg.com

Bulls will be on display
in the yards during the NWSS.

